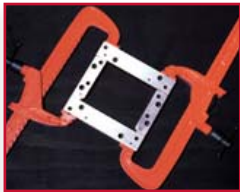
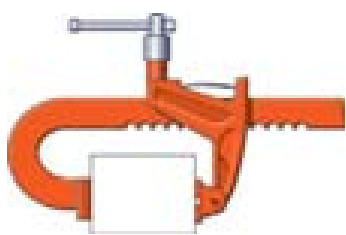
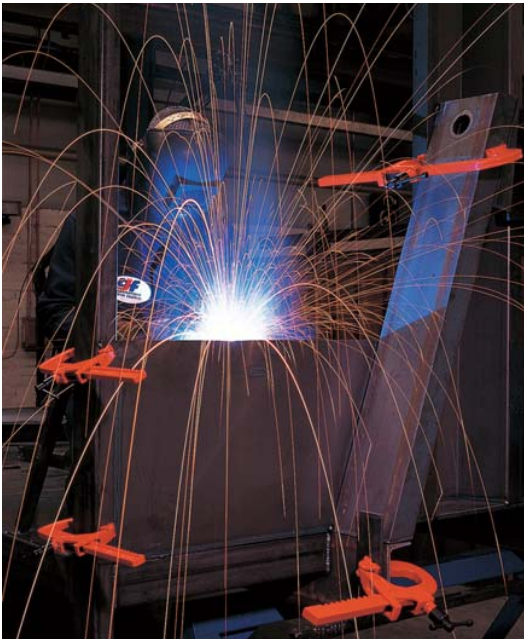


DAWN / CARVER RACK CLAMPS

These clamps, which consist of a frame and movable jaw, are sturdier than other “G”-clamp designs. Made from high-tensile, heat-treated steel. They hold work securely by two jaws, not a single jaw and a screw. Spring loaded jaw stays in position when pressure is removed. Jaw tilts to securely clamp angled surfaces. Tightening screw is shielded and positioned away from the work for protection from weld spatter and debris. For added versatility, the clamps can be used for spreading or locating, as well as for squeezing.

	Model No.	Part No.	Clamping Force (daN)	Jaw Opening (mm)	Throat Depth (mm)	Overall Length (mm)	Weight (kg)
Standard Duty	T186 - 150	301003	1130	150	60	245	1.4
	T186 - 300	301005	1130	300	60	395	1.8
	T186 - 500	301009	1130	500	60	640	2.5
	T186 - 750	301012	1130	750	60	890	3.2
Standard Duty Long Reach	T321 - 250	301101	565	250	120	360	2.0
	T321 - 600	301313	565	600	120	715	3.5
Medium Duty	T290 - 225	301046	1800	225	90	420	5.5
	T290 - 450	301049	1800	450	90	655	7.0
	T290 - 750	301052	1800	750	90	959	8.5
	T290 - 1000	301055	1800	1000	90	1216	10.5
Medium Duty Long Reach	T285 - 225	301035	900	225	200	420	7.1
	T285 - 450	301037	900	450	200	655	8.5
	T285 - 750	301039	900	750	200	959	10.0
	T285 - 1000	301055	900	1000	200	1216	11.5
Heavy Duty	T257 - 150	301172	2700	150	115	403	9.8
	T257 - 300	301173	2700	300	115	555	10.9
	T257 - 450	301174	2700	450	115	710	12.2
	T257 - 600	301175	2700	600	115	850	13.1
	T257 - 900	301176	2700	900	115	1165	15.8
	T257 - 1350	301177	2700	1350	115	1615	19.1



No obstruction from long screw. Ideal for structural steel fabrication.



Unaffected by weld spatter. Screw is shielded and out of work area.



Holds rounds to flats. Limited movement of moveable jaw pad and grooved face ensure positive grip on round objects.



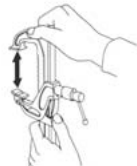
Will operate in reverse. Jaw may be reversed to give spreading action.



1. Loosen Screw



2. Push In Jaw Base



3. Slide Jaw Up or Down



4. Tighten Screw